

Placing of Reinforcement

Reinforcement

Reinforcement is to be the size and grade specified by the engineer and placed in accordance with his specifications. Prior to grouting, check to make sure that the rebar placement is as the engineer has specified.



in stem walls, it is typical to cut out a section 6" below grade in the stem at the door opening to allow for a solid connection between the slab and stem pours. This allows for a concrete base at the door opening.

Counting and Cutting Rebar to Length

Make certain that the rebar size, grade and spacing called for by the structural engineer is, in fact, being used. Start by counting how many pieces are needed and then cut that number of bars.

Once the pieces have been cut, bend them so they have at least a 2" hook or 'L' on the end. Confirm all reinforcement lengths and bends with your engineer's drawings. Be sure that consideration has been taken to account for bars that are going to be placed under windows or in door openings. Check the plans to verify at what height the bottom of the openings occur and to be sure the rebar will not interfere with these openings. Upon completion of this task, place and tie the rebar itself.

Marking Window and Door Openings

When laying out walls, note where window and door openings are to be placed. Panels should be marked with the location of these openings. Rebar needs to be placed on either side of these openings corresponding to the overall rebar configuration and building code requirements. These bars are usually required by the engineer. Care should be taken that the rebar will not interfere with the bottom



of the window openings. In the case of doorways it will be necessary to make sure the rebar does not extend above the slab into the actual opening. When allowing for door openings



Placing of Reinforcement

Wall Horizontal and Vertical Reinforcement

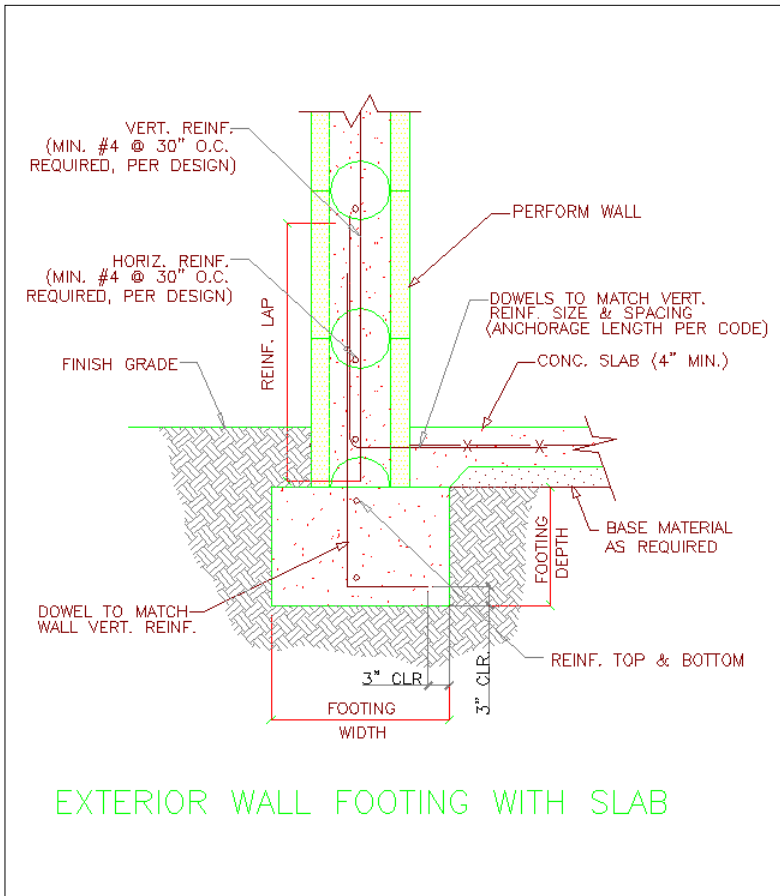
Once the reinforcement dowels for the footing have been placed and the concrete poured and cured the required number of days, the panels can be installed.

If laying the panels horizontally, reinforcement can be laid directly upon the panel material without chairs, unless otherwise required by the engineer. Vertical reinforcement can be dropped down into the cells prior to grouting the wall. If installing the panels vertically, horizontal reinforcement is fed into the horizontal cells as required and vertical reinforcement can be dropped down into the cells prior to grouting the wall.

Visual Inspection of Rebar Placement

Verification that reinforcement has indeed been placed as required can be made visually by sighting down or diagonally through the cells with a flashlight.

Note: Do not install end panels before an official inspection has taken place, as rebar placement will be concealed.



Marking Location of Rebar

While the walls are being constructed mark the location of the vertical reinforcement in the walls. Typically, a small vertical slash of spray paint is used (similar markings in different colors may be used for electrical and mechanical, placement, etc.).