

Connecting to Roofs and Floors

Ledgers and Anchor Bolts

The size and locations of the ledgers and the size and spacing of the anchor bolts should be specified by the engineer.



To install a ledger, first locate the correct height for the ledger and snap a line on the wall at the bottom of the ledger. This will allow correct positioning of the bottom of the ledger. However, if the top of the ledger needs to be

in a particular location then the line should be snapped for the top of the ledger instead.



After snapping the line, locate the vertical cells that anchor bolts will be placed in and cut holes as called for by the engineer. These holes are typically 4" or 6" in diameter and may be cut with either a keyhole saw or a drill with a hole saw of the proper

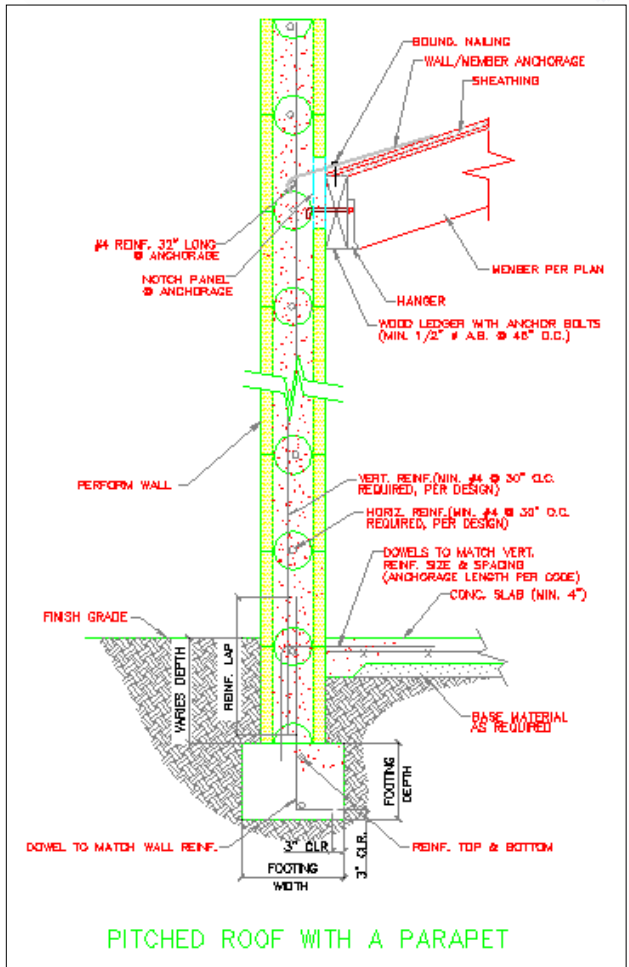
size. To ensure proper flow of grout within the wall, do not allow the cut out pieces to fall down inside of the wall.



As the holes cut into the PERFORM WALL™ panels are larger than the anchor bolts, it is easiest to install the ledgers and anchor bolts together. Drill holes to accept the anchor bolts at the desired spacing and bolt the anchor bolts onto the ledger.

There are several methods, which can be used to attach the ledger to the wall. The simplest is to glue the ledger directly onto the wall. However, it is recommended that all-thread rods be used to bolt the ledgers to the wall. The ledger can be predrilled to accept the all-thread rods and the rods driven through the PERFORM WALL™ panels with a large washer made of plywood (typically 6" in diameter).

Once the ledger is snug, check that the ledger is placed on the chalk line and then finish tightening the threaded rods. The threaded rod should be placed about 60" apart and if possible through areas in the PERFORM WALL™ panels that are solid. This will allow recovery of the threaded rod after the grout is cured. Once ledgers are in place, joists can be installed prior to pour of concrete if desired.



Connecting to Roofs and Floors

Truss Roofs

Truss roofs may be connected to PERFORM WALL™ panels in a manner similar to conventional frame construction. A top plate is attached to the wall by means of anchor bolts set into the top of the wall when the concrete is poured. The length and diameter of the anchor bolts are to be per engineer's specifications.

The top plate is typically a 2x where width depends upon the size of the PERFORM WALL™ panel selected (whether 8," 10," 12," or 14" in width).

